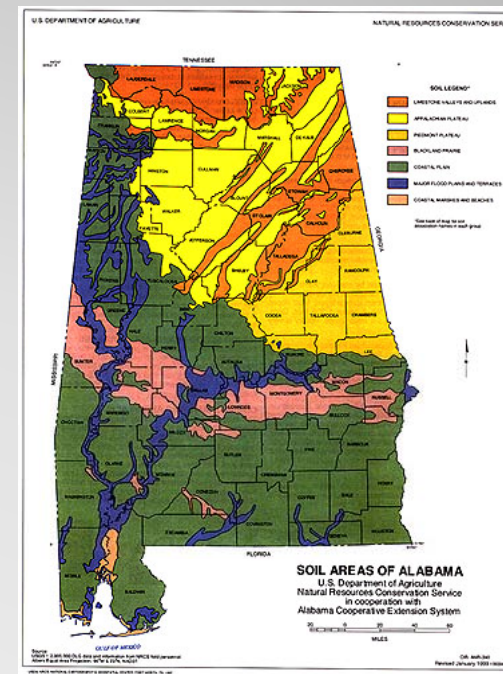




Sweet Home Alabama

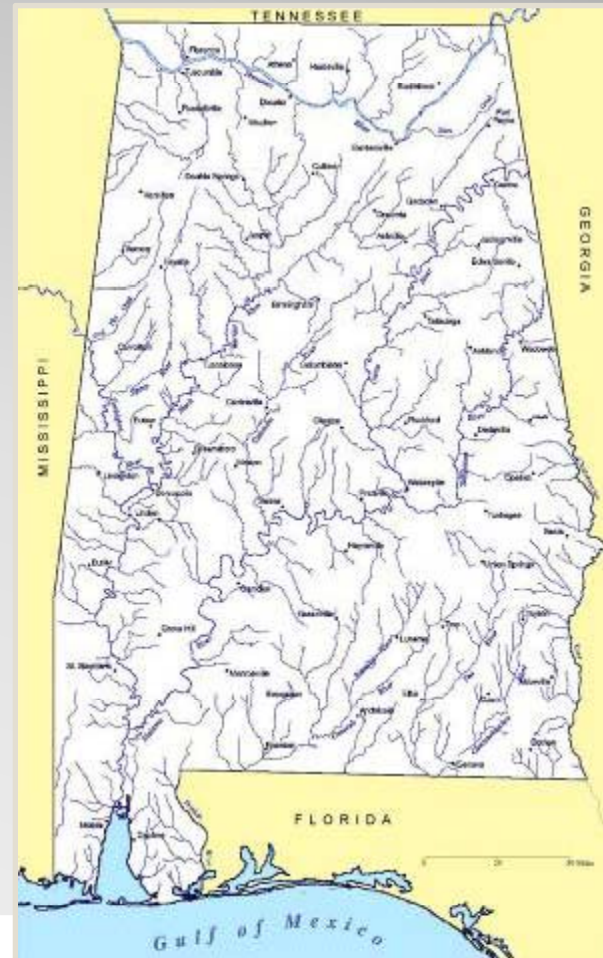
Physiographic Regions

- Limestone Valleys and Uplands
- Appalachian Plateau
- Piedmont Plateau
- Coastal Plain
- Blackland Prairie
- Flood Plains and Terraces
- Coastal Marshes



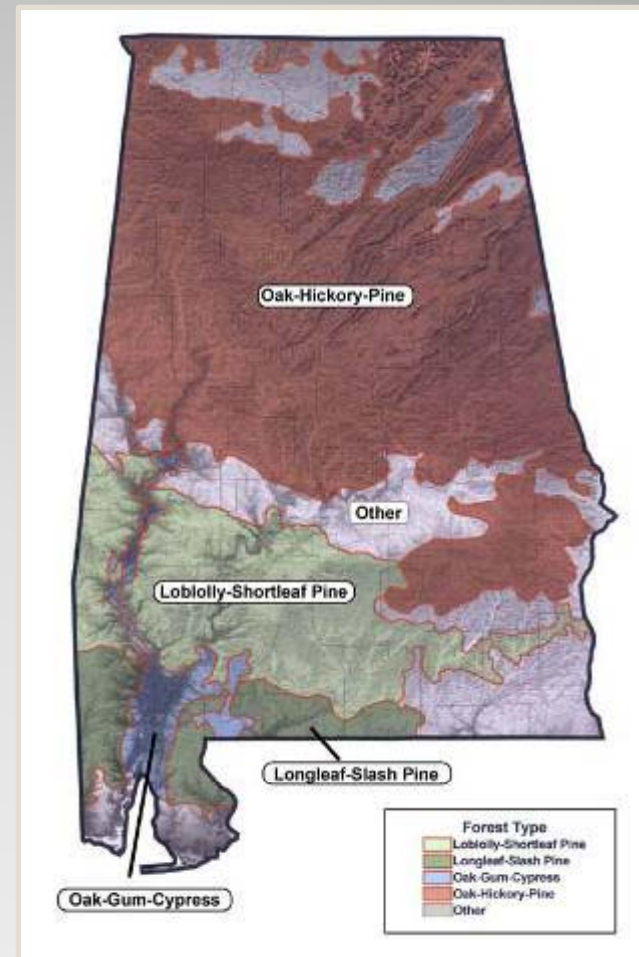
Alabama Rivers and Wetlands

- 11% of the state is wetland
- 77,000 miles of intermittent and perennial streams
- Produce 33.5 trillion gallons of water each year



Forest Types

- Forests cover 71% of the state
- 22 million acres of forestland
- 3rd in nation
- Over 300 species of trees



Alabama Biodiversity

- 5th in species – 4,533
- 2nd in extinctions
- 7th in endemic species



Alabama Biodiversity

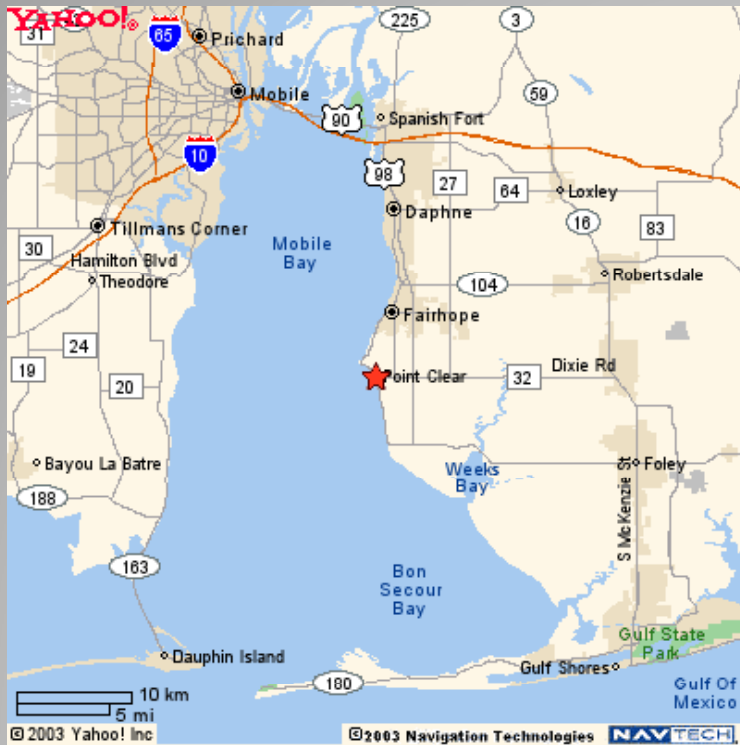
- 3,000 vascular plants
- 326 species of birds
- 6th in reptiles – 85 species
- 6th in amphibians – 68



Alabama Biodiversity

- Ranks 1st in the Nation in Fish Species with 284
- Ranks 1st in the Nation in Mussels with 60% of all North American Species





Site Location



The Marriott Grand



Rooms



Amenities



Amenities



Amenities



Amenities



Gulf Shores and Orange Beach



Mobile Tensaw Delta



Weeks Bay Reserve



People