

Carbon Cycle in Action

Instructions:

1. Choose a green space near your home or school. Look up your selected location on Google Earth.
2. Use the Historical Imagery Tool (🌐) to investigate changes in this location over time.
3. Fill in today's date in the first box on the line provided.
4. Identify the earliest available data set for this green space, and enter that date into the last row of the chart.
5. Choose two additional dates that are evenly spaced between the first and last date.
6. Using these four dates, complete the following chart and answer the questions on the next page.

Selected Green Space: _____

Date	Estimated amount land covered by trees (0%, 25%, 50%, 75%, or 100%)	Estimated amount of carbon stored (high, medium, low, or none)	Changes to landscape since previous date
Today _____			

Earliest Available Data _____			

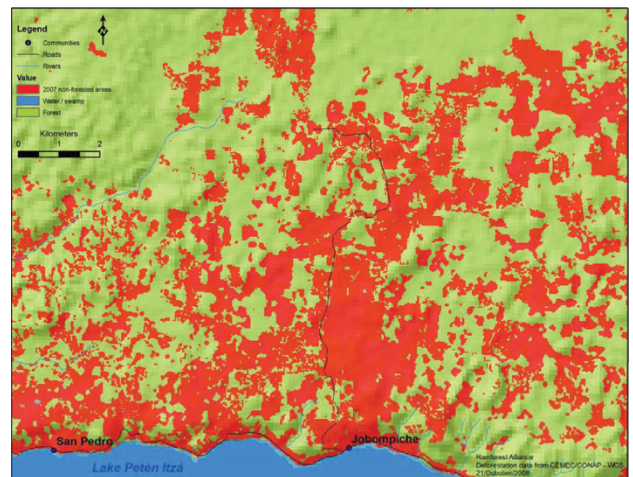
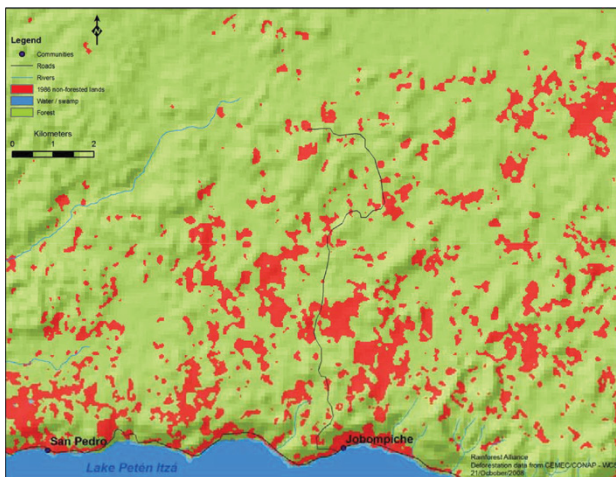
Carbon Cycle in Action

Answer the following questions using the data you have collected.

1 What happened to the amount of carbon stored? Explain any changes.

2 What do you suggest should be done to the area to maximize carbon storage?

3 Describe elements of the carbon cycle you see in action in this area.



Refer to Project Learning Tree's *Carbon & Climate* e-unit for more hands-on activities for students that show the carbon cycle in action. Go to www.plt.org/curriculum/e-unit/carbon-and-climate/.